



MD7IC2251GNR1

Inombolo yendawo	MD7IC2251GNR1	RoHs Imeko	N/A
Umkhiqizi / Umshicileli	Freescale / NXP Semiconductors	Isimo seStock	4517 pcs stock
Ingcaciso yeMveliso	IC AMP W-CDMA 2.11-2.17GHZ TO270	Umkhumbi	Hong Kong
Maxwebhu	MD7IC2251(G)NR1.pdf	Indlela yokuthunyelwa	DHL/Fedex/TNT/UPS/EMS

Fumana i-Quote

Nceda ucofe u "Fumana isicatshulwa" kwaye ugcwalise onke amasimi afunekayo. Siza kuphendula kwisicelo sakho kwisithuba seeyure ezingama-24 nge-imeyile. Ukuba udibana nayiphi na imicimbi, nceda ushiye umyalezo okanye i-imeyile info@global-ic.hk, kwaye siya kubuyela kuwe ngokukhawuleza.

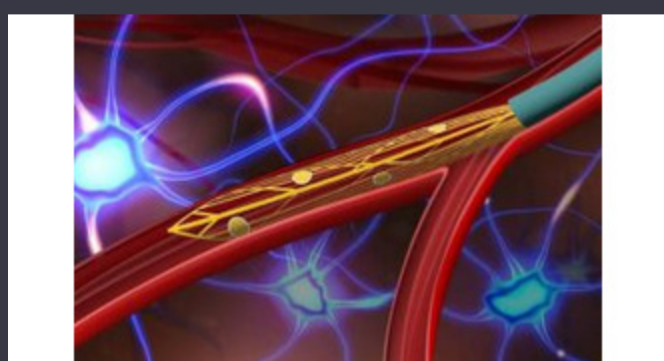
FUMANA I-QUOTE

Umfanekiso ungabonakaliswa. Bona iinkcukacha zeenkukacha zeemveliso.

I-yeenkcazo ze-ye-MD7IC2251GNR1

Ukunikezela ngeeVotsi	26V ~ 32V	Uvavanyo loLwazi	2.14GHz
Iphakheji yeCandelo leNkonzo	TO-270 WB-14 GULL	Uchungechunge	-
Uhlobo lweRF	W-CDMA	Iphakheji / Iimeko	TO-270-14 Variant, Gull Wing
Iphakheji	Tape & Reel (TR)	P1dB	46dBm
Umsindo Umsindo	-	Uhlobo lokuPhakamisa	Surface Mount
Fumana	29dB	Ukuphindaphinda	2.11GHz ~ 2.17GHz
Ukunikezelwa kwangoku	-	Inombolo yemveliso yemveliso	MD7IC2251

Iindaba ezinxulumene noko



Ubuncinci obuncinci obungachaphazeli bhetele bhetele i-neuron enye
2023/07/21

Ingalo yekhompyuter-kwimodyuli ineprosesa ye-1GHZ
2023/09/15

I-Toshiba yongeza i-spine-pic ye-pic ye-mosfet yokusika ilahleko
2023/08/31

I-Sony ijolise kwikamera kumanzi kunye neerobothi zabasebenzisi bemizi-mveliso
2023/09/6

I-AutoMotive Boll Sensor i-1% ngaphezulu kobomi kwaye ibandakanya i-MCU
2023/09/12

Umhlaba ongenisiweyo: Alded Alder Lake DCS
2023/03/15

Ingxelo yenkqubela phambili ye-Reram
2023/04/26

I-Borgwarner ifumana i-SIC isuka kwi-st kunye ne-onsemi
2023/08/31

Umxholo oxhaswayo: Ikamva lokhuseleko lwemoto ngoyilo
2023/04/19

Umhlaba ongenisiweyo
2023/03/15

Umhlaba ongenisiweyo: I-Wi-Fi 6, iBluetooth kunye ne-IEEE 802.15.4 LR-WPAN WPAN kwimodyuli enye
2023/03/16

Umvalo we-Audio kunye nendawo yayo kwindaleko yeBluetooth
2023/07/19